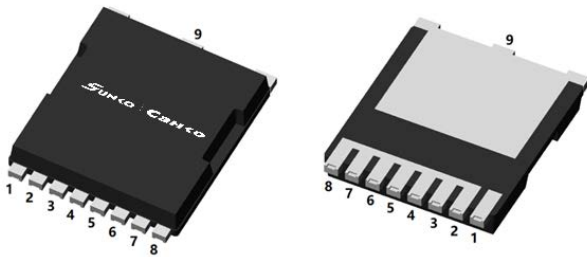


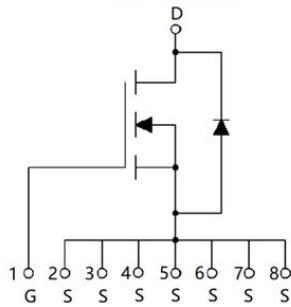
## N-Channel Enhancement Mode Field Effect Transistor



Top View

Bottom View

TOLL



### Product Summary

- $V_{DS}$  100V
- $I_D$  265A
- $R_{DS(ON)}$  ( at  $V_{GS}=10V$ )  $<2.1m\Omega$
- 100% EAS Tested
- 100%  $\nabla V_{DS}$  Tested

### General Description

- Split gate trench MOSFET technology
- Excellent package for heat dissipation
- High density cell design for low  $R_{DS(ON)}$
- Moisture Sensitivity Level 1
- Epoxy Meets UL 94 V-0 Flammability Rating
- Halogen Free

### Applications

- Load switch
- Battery management
- Solar

### ■ Absolute Maximum Ratings ( $T_J=25^\circ C$ unless otherwise noted)

Parameter			Symbol	Limit	Unit
Drain-source Voltage			$V_{DS}$	100	V
Gate-source Voltage			$V_{GS}$	$\pm 20$	V
Continuous Drain Current (Note 1,2)	Steady-State	$T_A=25^\circ C$	$I_D$	25	A
		$T_A=100^\circ C$		17	
Continuous Drain Current (Note 1,3)	Steady-State	$T_C=25^\circ C$		265	
		$T_C=100^\circ C$		187	
Pulsed Drain Current	$T_C=25^\circ C, t_p=100\mu s$		$I_{DM}$	1060	A
Avalanche energy	$V_G=10V, R_G=25\Omega, L=2mH, I_{AS}=38.5A$		EAS	1482	mJ
Total Power Dissipation (Note 1,2)	Steady-State	$T_A=25^\circ C$	$P_D$	3.3	W
		$T_A=100^\circ C$		1.6	
Total Power Dissipation (Note 1,3)	Steady-State	$T_C=25^\circ C$		375	
		$T_C=100^\circ C$		187	
Junction and Storage Temperature Range			$T_J, T_{STG}$	-55~+175	$^\circ C$

### ■ Thermal resistance

Parameter		Symbol	Typ	Max	Units
Thermal Resistance Junction-to-Ambient (Note 2)	Steady-State	$R_{\theta JA}$	35	45	$^\circ C/W$
Thermal Resistance Junction-to-Case	Steady-State	$R_{\theta JC}$	0.3	0.4	

### ■ Ordering Information (Example)

PREFERRED P/N	PACKING CODE	Marking	MINIMUM PACKAGE(pcs)	INNER BOX QUANTITY(pcs)	OUTER CARTON QUANTITY(pcs)	DELIVERY MODE
SCT2D1G10H	F1	SCT2D1G10H	2000	4000	20000	13" reel

# SCT2D1G10H

## ■ Electrical Characteristics (T<sub>J</sub>=25°C unless otherwise noted)

Parameter	Symbol	Conditions	Min	Typ	Max	Units
<b>Static Parameter</b>						
Drain-Source Breakdown Voltage	BV <sub>DSS</sub>	V <sub>GS</sub> = 0V, I <sub>D</sub> =250μA	100	-	-	V
		V <sub>GS</sub> = 0V, I <sub>D</sub> =1mA	100	-	-	V
Zero Gate Voltage Drain Current	I <sub>DSS</sub>	V <sub>DS</sub> =100V, V <sub>GS</sub> =0V	-	-	1	μA
		V <sub>DS</sub> =100V, V <sub>GS</sub> =0V, T <sub>J</sub> =125°C	-	-	100	
Gate-Body Leakage Current	I <sub>GSS</sub>	V <sub>GS</sub> = ±20V, V <sub>DS</sub> =0V	-	-	±100	nA
Gate Threshold Voltage	V <sub>GS(th)</sub>	V <sub>DS</sub> = V <sub>GS</sub> , I <sub>D</sub> =250μA	2.2	3.0	3.8	V
Static Drain-Source On-Resistance	R <sub>DS(ON)</sub>	V <sub>GS</sub> =10V, I <sub>D</sub> =50A	-	1.5	2.1	mΩ
Diode Forward Voltage	V <sub>SD</sub>	I <sub>S</sub> =30A, V <sub>GS</sub> =0V	-	-	1.2	V
Gate resistance	R <sub>G</sub>	f=1MHz	-	0.85	-	Ω
Maximum Body-Diode Continuous Current	I <sub>S</sub>		-	-	265	A
<b>Dynamic Parameters</b>						
Input Capacitance	C <sub>iss</sub>	V <sub>DS</sub> =50V, V <sub>GS</sub> =0V, f=1MHz	-	9600	-	pF
Output Capacitance	C <sub>oss</sub>		-	3245	-	
Reverse Transfer Capacitance	C <sub>rss</sub>		-	48	-	
<b>Switching Parameters</b>						
Total Gate Charge	Q <sub>g</sub>	V <sub>GS</sub> =10V, V <sub>DS</sub> =50V, I <sub>D</sub> =50A	-	132.5	-	nC
Gate-Source Charge	Q <sub>gs</sub>		-	55	-	
Gate-Drain Charge	Q <sub>gd</sub>		-	17	-	
Reverse Recovery Charge	Q <sub>rr</sub>	I <sub>F</sub> =50A, di/dt=100A/us	-	157	-	nC
Reverse Recovery Time	t <sub>rr</sub>		-	93	-	ns
Turn-on Delay Time	t <sub>D(on)</sub>	V <sub>GS</sub> =10V, V <sub>DD</sub> =50V, I <sub>D</sub> =50A R <sub>GEN</sub> =3Ω	-	30	-	ns
Turn-on Rise Time	t <sub>r</sub>		-	48	-	
Turn-off Delay Time	t <sub>D(off)</sub>		-	59	-	
Turn-off fall Time	t <sub>f</sub>		-	34	-	

Note:

- The entire application environment impacts the thermal resistance values shown, they are not constants and are only valid for the particular conditions noted.
- The value of R<sub>θJA</sub> is measured with the device mounted on the 40mm\*40mm\*1.1mm single layer FR-4 PCB board with 1 in<sup>2</sup> pad of 2oz. Copper, in the still air environment with T<sub>A</sub> =25°C. The maximum allowed junction temperature of 175°C. The value in any given application depends on the user's specific board design.
- Thermal resistance from junction to soldering point (on the exposed drain pad).

Typical Electrical and Thermal Characteristics Diagrams

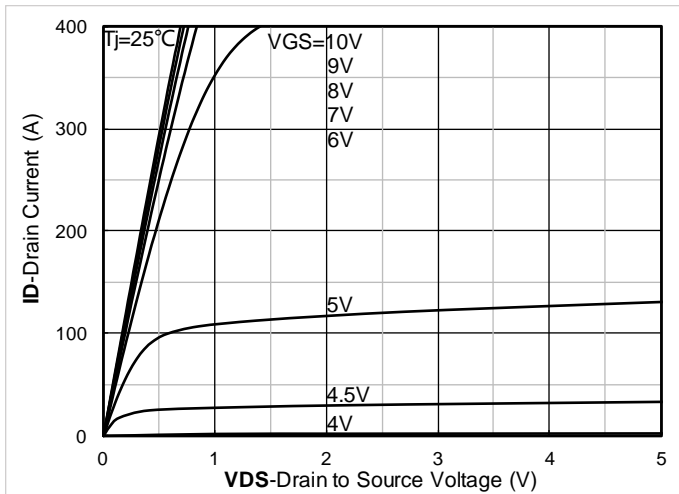


Figure 1. Output Characteristics

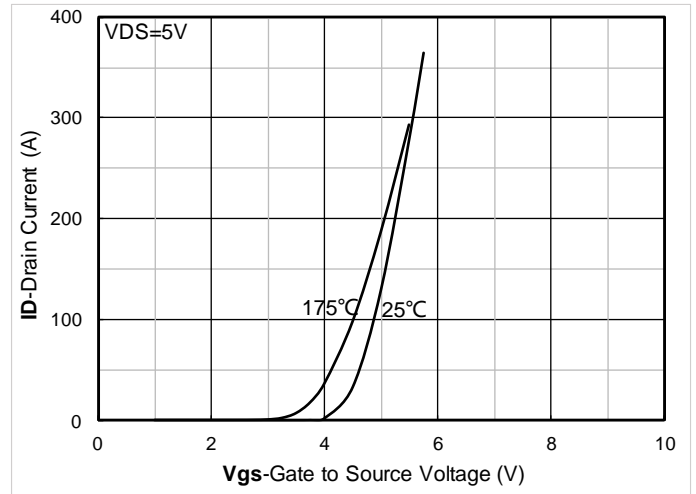


Figure 2. Transfer Characteristics

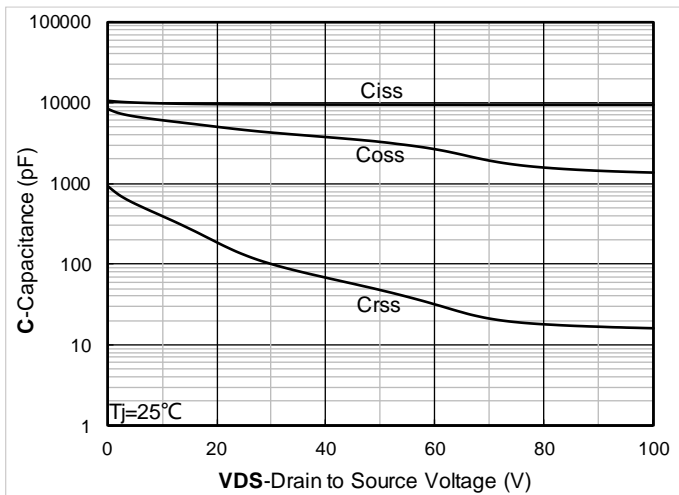


Figure 3. Capacitance Characteristics

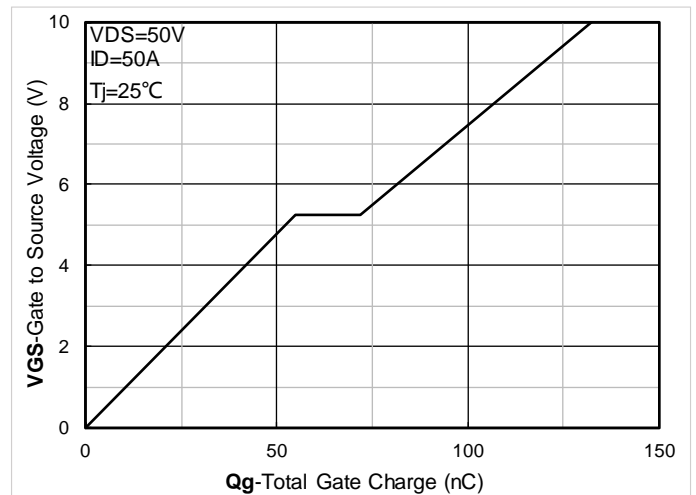


Figure 4. Gate Charge

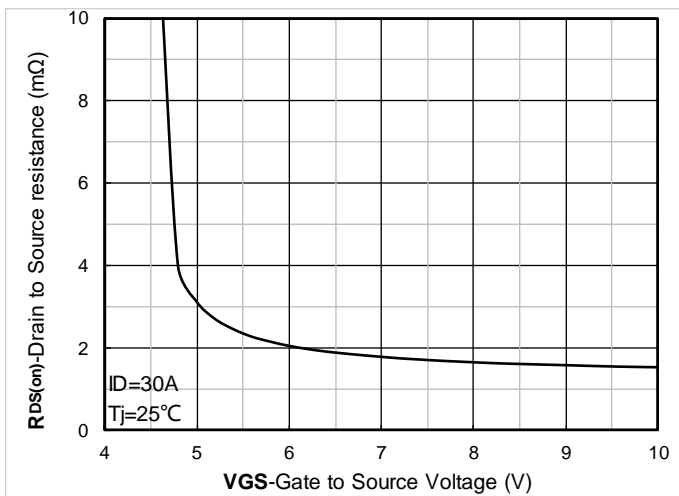


Figure 5. On-Resistance vs Gate to Source Voltage

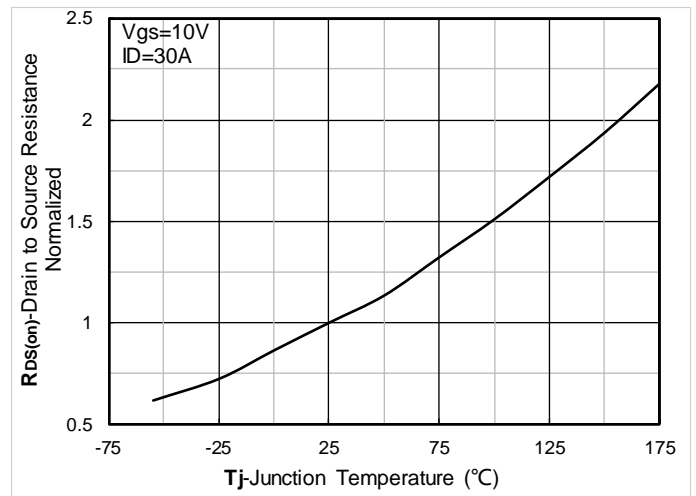


Figure 6. Normalized On-Resistance

# SCT2D1G10H

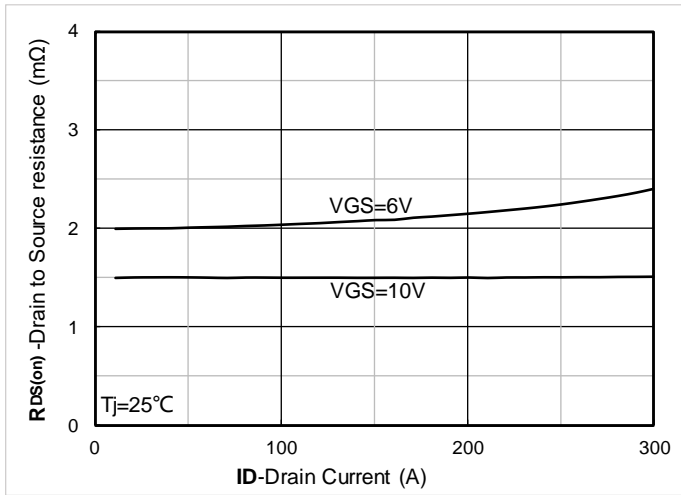


Figure 7. RDS(on) VS Drain Current

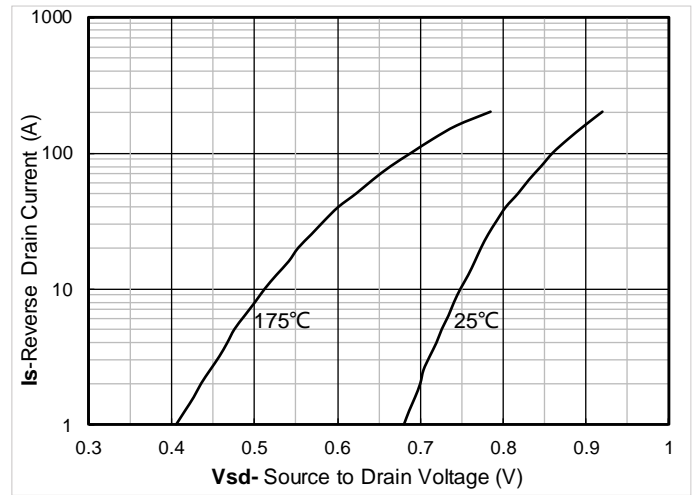


Figure 8. Forward characteristics of reverse diode

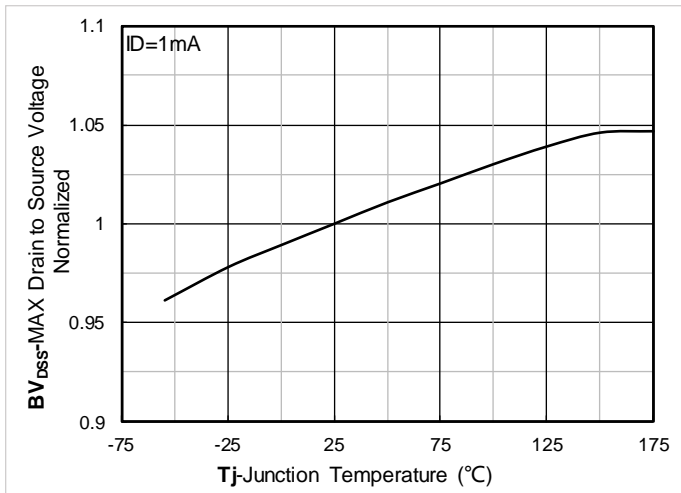


Figure 9. Normalized breakdown voltage

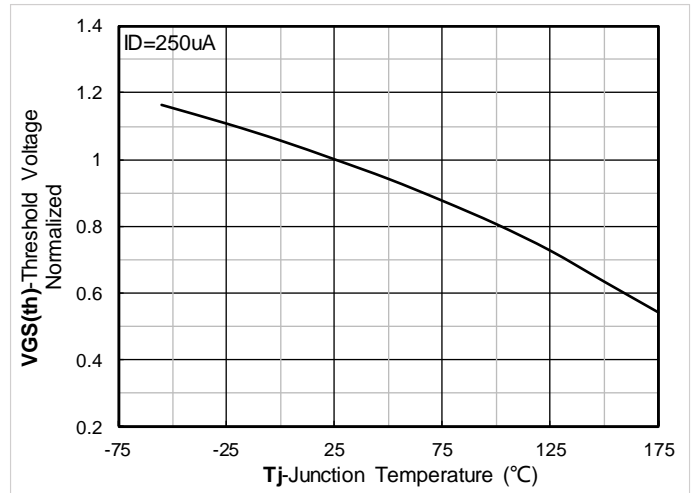


Figure 10. Normalized Threshold voltage

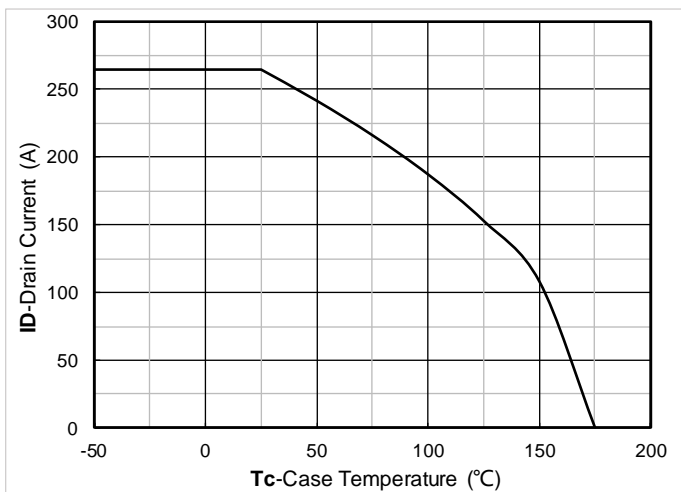


Figure 11. Current dissipation

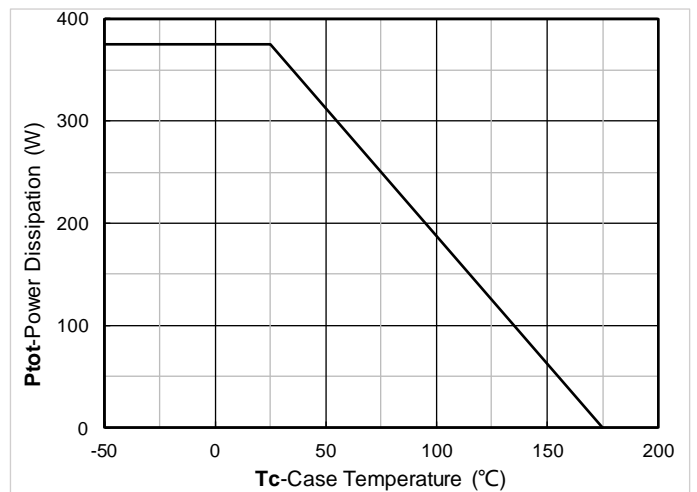


Figure 12. Power dissipation

# SCT2D1G10H

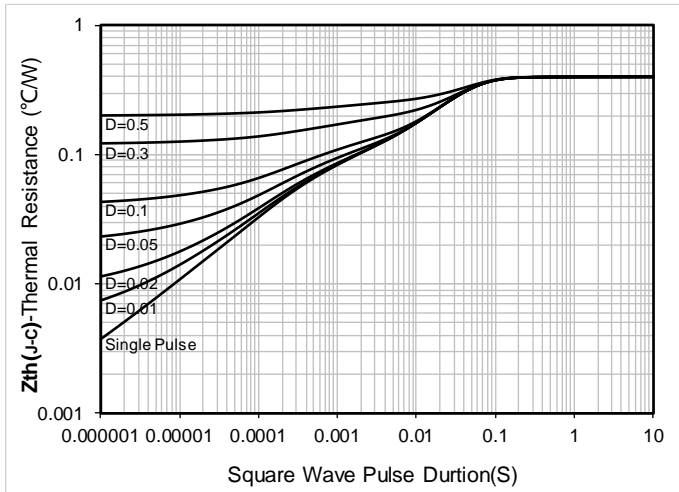


Figure 13. Maximum Transient Thermal Impedance

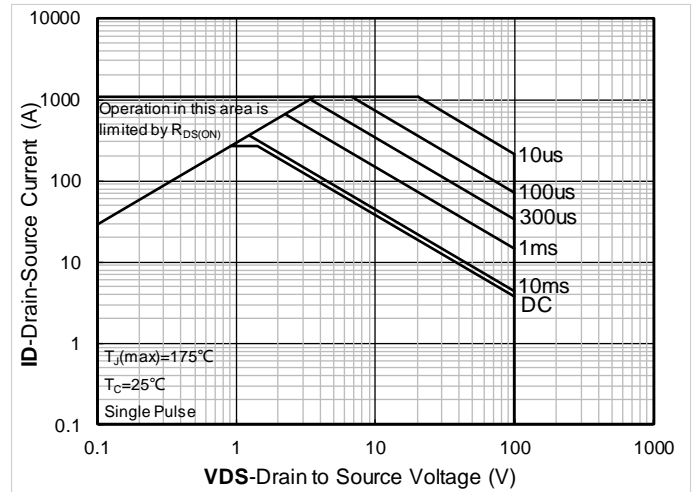


Figure 14. Safe Operation Area

## Test Circuits & Waveforms

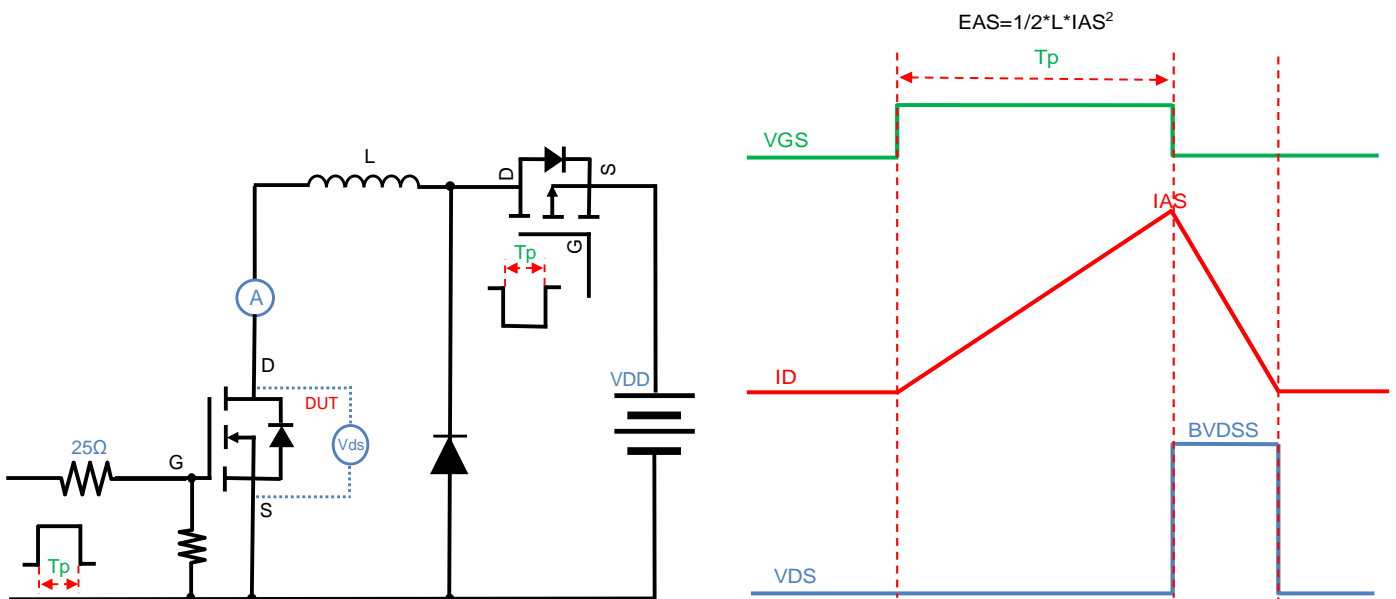


Figure A. Unclamped Inductive Switching (UIS) Test Circuit & Waveform

# SCT2D1G10H

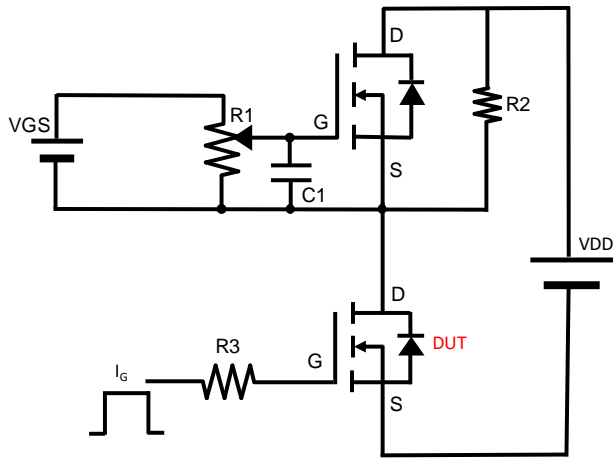


Figure B. Gate Charge Test Circuit & Waveform

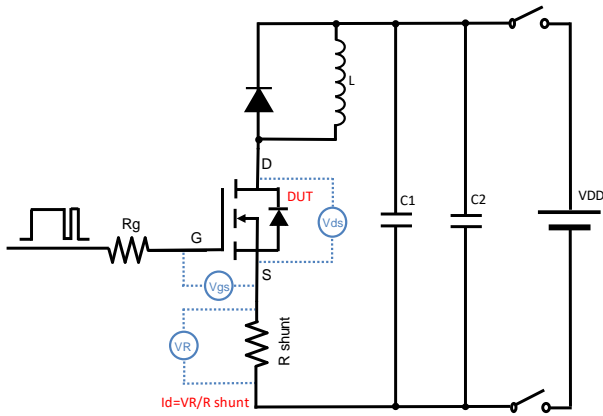


Figure C. Resistive Switching Test Circuit & Waveform

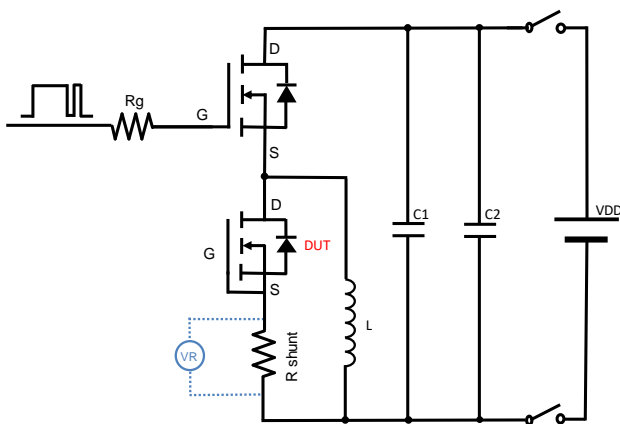
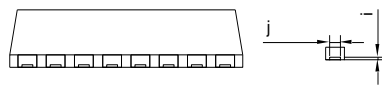
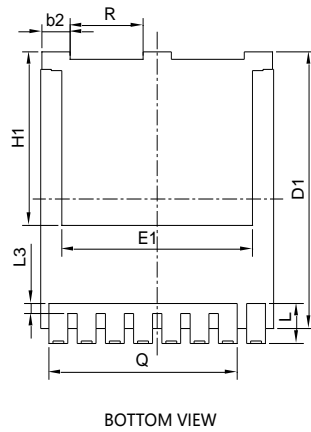
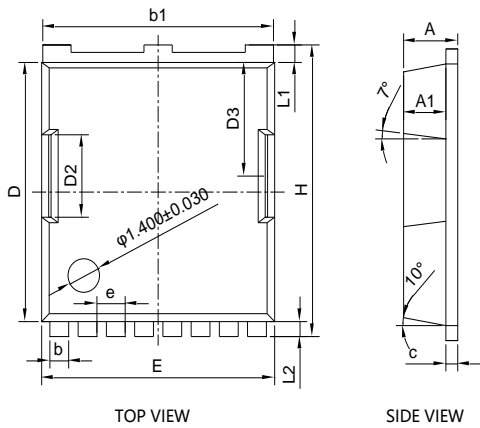


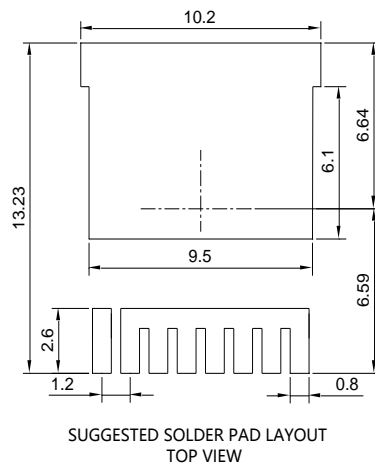
Figure D. Diode Recovery Test Circuit & Waveform

# SCT2D1G10H

## ■ TOLL Package information



Note:  
 1. Controlling dimension: in millimeters.  
 2. General tolerance:  $\pm 0.03\text{mm}$ .  
 3. The pad layout is for reference purposes only.



SYMBOL	MILLIMETER		
	MIN	NOM	MAX
A	2.2	2.3	2.4
A1	1.7	1.8	1.9
b	0.7	0.8	0.9
b1	9.7	9.8	9.9
b2	1.1	1.2	1.3
c	0.4	0.5	0.6
D	10.28	10.38	10.48
D1	10.98	11.08	11.18
D2	3.2	3.3	3.4
D3	4.45	4.55	4.65
E	9.8	9.9	10
E1	8	8.1	8.2
e	1.2 BSC		
H	11.58	11.68	11.78
H1	6.95 BSC		
i	0.1 REF		
j	0.46 REF		
L	1.5	1.6	1.7
L1	0.6	0.7	0.8
L2	0.5	0.6	0.7
L3	0.3	0.4	0.5
Q	8 REF		
R	3.0	3.1	3.2

UNIT: mm

**Disclaimer**

The information presented in this document is for reference only. Shanghai Sunco Electronics Co., Ltd reserves the right to make changes without notice for the specification of the products displayed herein to improve reliability, function or design or otherwise.

The product listed herein is designed to be used with automotive electronics, are not designed for use in medical, life-saving, lifesustaining, or military, Russiansunco or anyone on its behalf, assumes no responsibility or liability for any damages resulting from such improper use of sale.

This publication supersedes & replaces all information previously supplied. For additional information, please visit our website <http://www.russiansunco.com> or consult your nearest Russiansunco's sales office for further assistance.